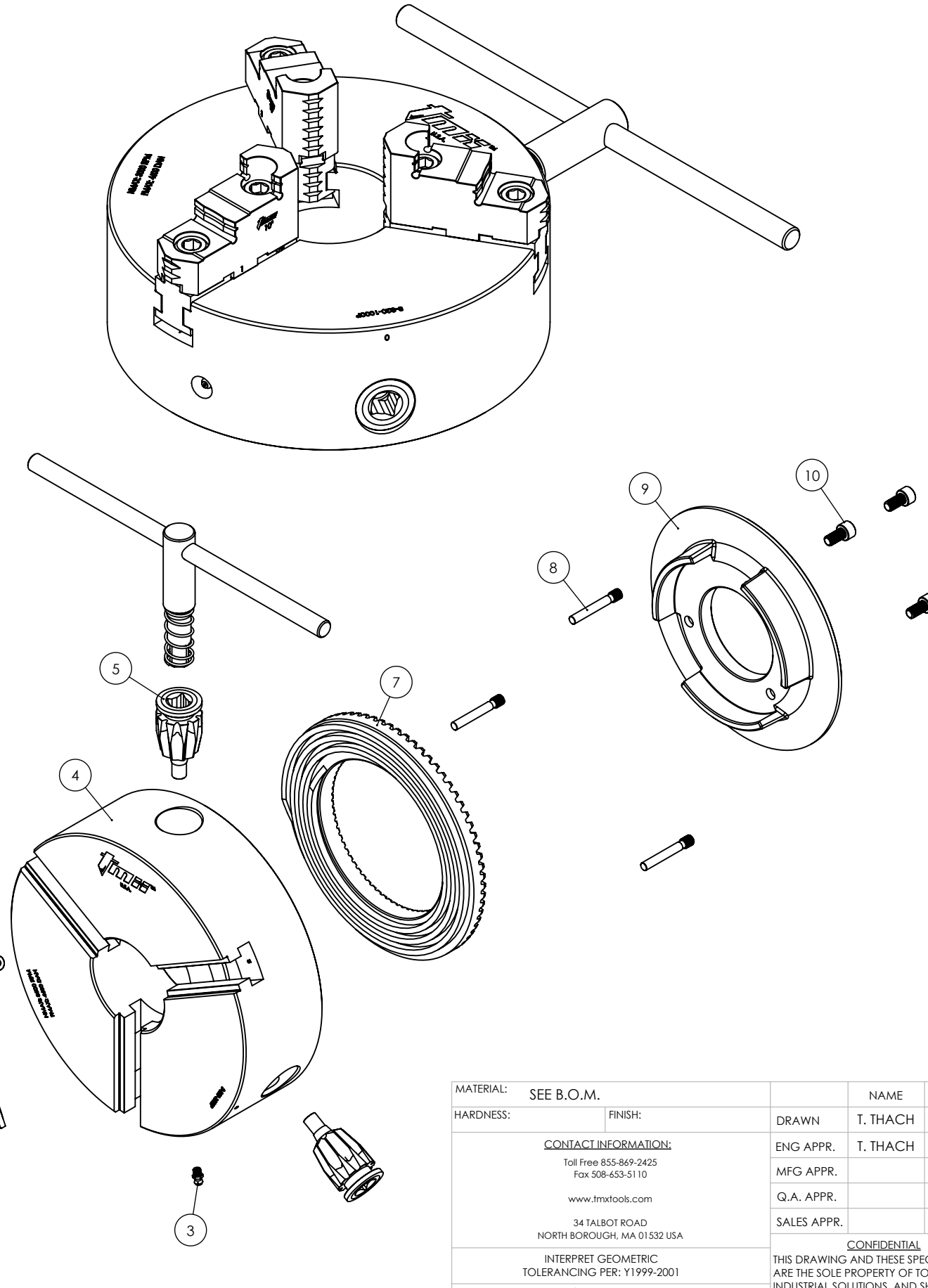


ITEM NO.	PART NUMBER	DESCRIPTION	QTY
2	3-891-310P	FULL OEM JAW REPLACEMENT SET, 10IN, 3-JAW	3
3	M6x1.0 GREASE FITTING	MCMMASTER P/N 1105K71	1
4	C-CK10-BDY3J	CHUCK BODY, 10IN	1
5	3-886-310P	PINION FOR 10IN SCROLL CHUCK	3
7	3-887-310P	SCROLL PLATE FOR 10IN CHUCK	1
8	3-888-910P	PINION SCREW FOR 8, 10 OR 12in CHUCK	3
9	C-CK10-COVER	PLATE, COVER, MACHINED	1
10	M8x1.25X16 SHCS	SHCS, M8x1.25X16	3
9	3-889-012P	WRENCH FOR 10IN & 12IN SCROLL CHUCK	1

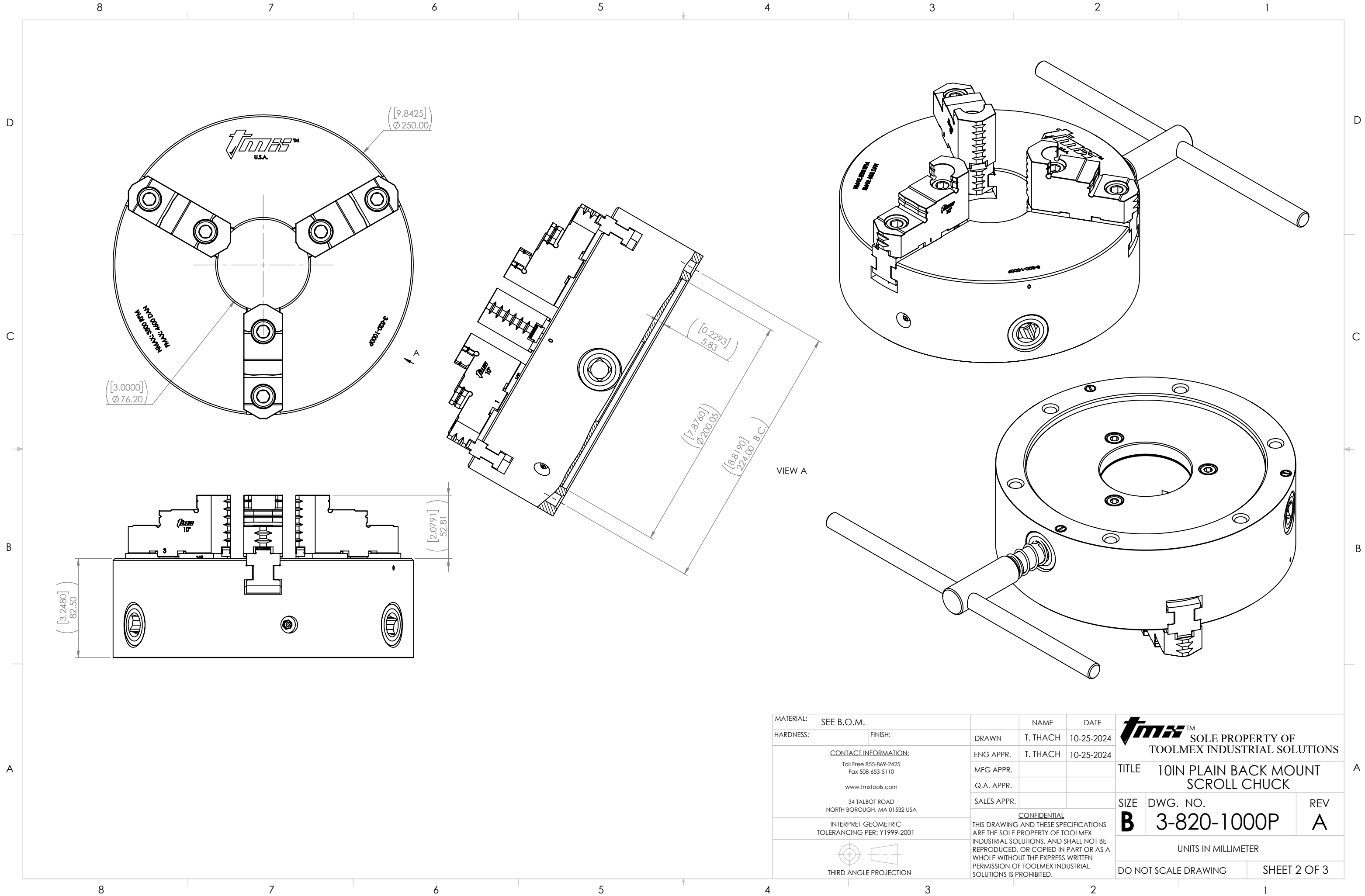
-CLICK ON LINK BELOW FOR REPLACEMENT PARTS-

[WWW.TOOLMEX.COM](http://WWW.TOOLMEX.COM)



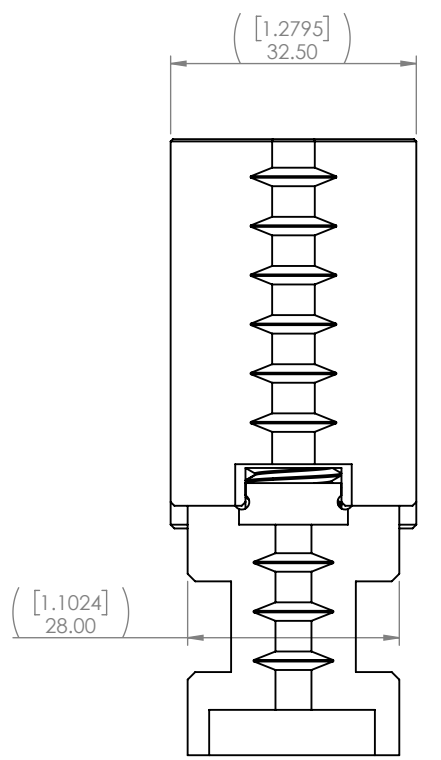
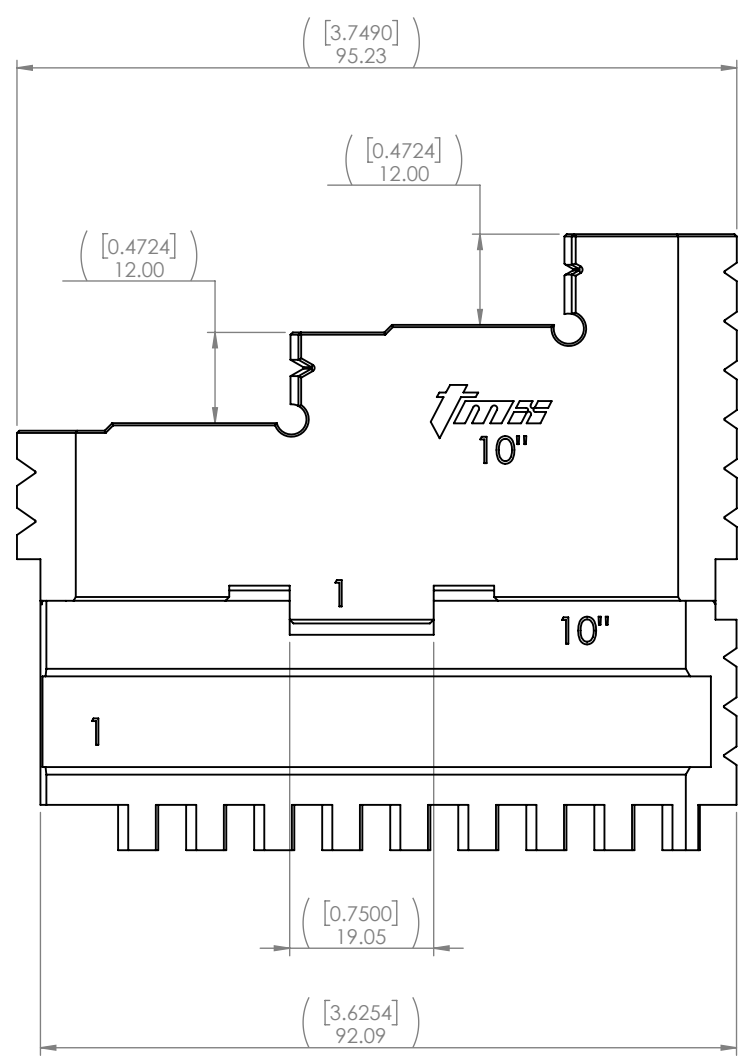
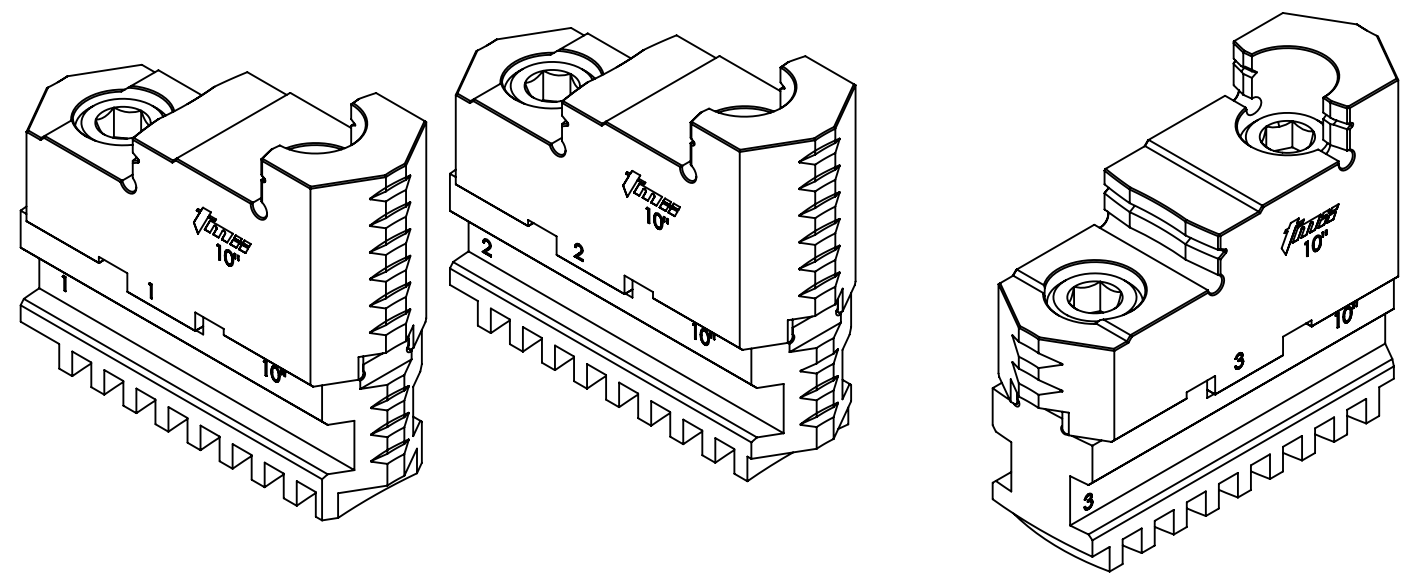
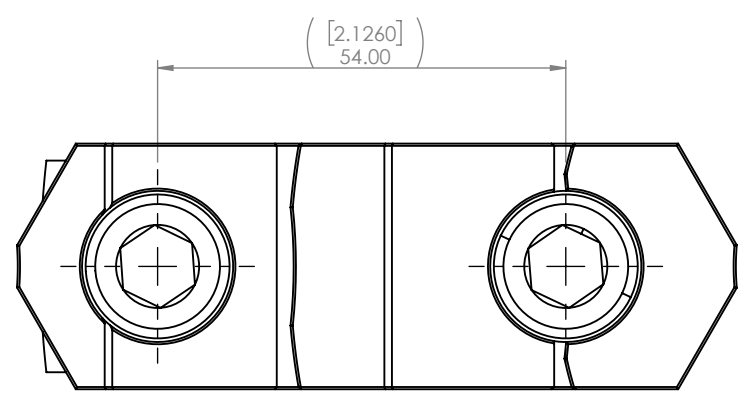
SELLING UNIT: EACH  
 CHUCK TYPE: SCROLL  
 CHUCK SIZE: 10IN  
 BODY MATERIAL: FORGED STEEL  
 NUMBER OF JAWS: 3  
 JAW TYPE: 2 PIECES  
 WEIGHT: 64 LBS  
 MOUNT TYPE: FRONT  
 GRIPPING FORCE: 4600 daN  
 SPEED: 3500 RPM Max.

MATERIAL:	SEE B.O.M.	NAME	T. THACH	DATE	10-25-2024
HARDNESS:		FINISH:		DRAWN	T. THACH
<u>CONTACT INFORMATION:</u> Toll Free 855-869-2425 Fax 508-653-5110 www.tmxtools.com 34 TALBOT ROAD NORTH BOROUGH, MA 01532 USA		ENG APPR.	T. THACH	10-25-2024	<b>tmx</b> ™ SOLE PROPERTY OF TOOLMEX INDUSTRIAL SOLUTIONS TITLE 10IN PLAIN BACK MOUNT SCROLL CHUCK SIZE DWG. NO. REV <b>B</b> 3-820-1000P <b>A</b> UNITS IN MILLIMETER DO NOT SCALE DRAWING SHEET 1 OF 3
INTERPRET GEOMETRIC TOLERANCING PER: Y1999-2001		MFG APPR.			
THIRD ANGLE PROJECTION		Q.A. APPR.			
		SALES APPR.			
CONFIDENTIAL THIS DRAWING AND THESE SPECIFICATIONS ARE THE SOLE PROPERTY OF TOOLMEX INDUSTRIAL SOLUTIONS, AND SHALL NOT BE REPRODUCED, OR COPIED IN PART OR AS A WHOLE WITHOUT THE EXPRESS WRITTEN PERMISSION OF TOOLMEX INDUSTRIAL SOLUTIONS IS PROHIBITED.					



MATERIAL:	SEE B.O.M.	NAME	T. THACH	DATE	10-25-2024
HARDNESS:		FINISH:			
<p><b>CONTACT INFORMATION:</b>  Toll Free 855-869-2425  Fax 508-653-5110  www.tmxtools.com  34 TALBOT ROAD  NORTH BOROUGH, MA 01532 USA</p>			DRAWN	T. THACH	10-25-2024
<p>INTERPRET GEOMETRIC  TOLERANCING PER: Y1999-2001</p>			ENG APPR.	T. THACH	10-25-2024
<p>THIRD ANGLE PROJECTION</p>			MFG APPR.		
<p>CONFIDENTIAL  THIS DRAWING AND THESE SPECIFICATIONS  ARE THE SOLE PROPERTY OF TOOLMEX  INDUSTRIAL SOLUTIONS, AND SHALL NOT BE  REPRODUCED, OR COPIED IN PART OR AS A  WHOLE WITHOUT THE EXPRESS WRITTEN  PERMISSION OF TOOLMEX INDUSTRIAL  SOLUTIONS IS PROHIBITED.</p>			Q.A. APPR.		
			SALES APPR.		
		<p><b>SOLE PROPERTY OF  TOOLMEX INDUSTRIAL SOLUTIONS</b></p>		<p><b>TITLE 10IN PLAIN BACK MOUNT  SCROLL CHUCK</b></p>	
SIZE	DWG. NO.	REV			
<b>B</b>	<b>3-820-1000P</b>	<b>A</b>			
<p>UNITS IN MILLIMETER</p>					
DO NOT SCALE DRAWING			SHEET 2 OF 3		

8 7 6 5 4 3 2 1



**-CLICK ON LINKS BELOW FOR REPLACEMENT PARTS-**  
[3-883-310P, HARD TOP JAWS, 6IN, 3-JAW 3 PC SET](#)  
[3-885-310P, HARD MASTER JAWS, 6IN, 3-JAW 3 PC SET](#)

MATERIAL:	SEE B.O.M.	NAME	T. THACH	DATE	10-25-2024
HARDNESS:		FINISH:		DRAWN	T. THACH
<p><b>CONTACT INFORMATION:</b>                  Toll Free 855-869-2425                  Fax 508-653-5110                  www.tmxtools.com                  34 TALBOT ROAD                  NORTH BOROUGH, MA 01532 USA</p> <p>INTERPRET GEOMETRIC                  TOLERANCING PER: Y1999-2001</p> <p>THIRD ANGLE PROJECTION</p>			ENG APPR.	T. THACH	10-25-2024
			MFG APPR.		
			Q.A. APPR.		
			SALES APPR.		
<p>CONFIDENTIAL                  THIS DRAWING AND THESE SPECIFICATIONS                  ARE THE SOLE PROPERTY OF TOOLMEX                  INDUSTRIAL SOLUTIONS, AND SHALL NOT BE                  REPRODUCED, OR COPIED IN PART OR AS A                  WHOLE WITHOUT THE EXPRESS WRITTEN                  PERMISSION OF TOOLMEX INDUSTRIAL                  SOLUTIONS IS PROHIBITED.</p>			<p><b>TOOLMEX</b>™                  SOLE PROPERTY OF                  TOOLMEX INDUSTRIAL SOLUTIONS</p>		
<p>TITLE 10IN PLAIN BACK MOUNT                  SCROLL CHUCK</p>		SIZE	DWG. NO.	REV	
		<b>B</b>	<b>3-820-1000P</b>	<b>A</b>	
<p>UNITS IN MILLIMETER</p>					
DO NOT SCALE DRAWING			SHEET 3 OF 3		

8 7 6 5 4 3 2 1